

Balaji Enterprises

Balaji Enterprises is a professional manufacturer with development, design production and sales of medical equipment/facilities. The products include electric beds, and other medical supplies for hospital, aged centre and nursing home. We have established a modern corporate management structure and successfully passed **ISO13485, CE, ISO9001, BIFMA** certificate which is hallmark of quality. Thus all our endeavors are directed towards providing world-class products and services that confirms to heights industry norms. We are registered company with **NSIC, MSME, and SSI**.

We have successfully established ourselves as a distinguished organization because of our premium quality products, timely services and cost-effectiveness. Our products are supplied all over India to Government as Private Hospitals, Nursing Homes and Medical Colleges. We have been exporting our quality equipment to various countries. Our quality and service has made us company of repute in the hospital Equipment manufacturing industry.

The attributes behind our success are state-of-the-art production facilities, quality management system, extensive R&D and customer oriented approach. We have the expertise to design according to your special needs. We also have the ability to overcome scientific problems and to develop new products continuously.

We can handle complete production cycle raw materials to finished products. We never out source our product; all products are manufactured at our manufacturing unit using best quality raw material available in India & Foreign. We use latest modern machinery & technology. We have our own powder coating plant for the finest coating on products with 11 tanks Hot Treatment Plant.

Furthermore, we are dynamic enough to meet the ever changing requirements of global markets. **“Quality & Service”** is our main motto.

Our Mission & Vision

- Our mission is to provide hospital equipment service in a fiscally responsible manner which contribute to the physical, psychological, emotional & spiritual well being of each patient and community that serves it.
- To provide superior products & services by developing innovation & solution that improves the quality of a product & satisfies customer/client needs'.
- To strengthen our relationships with Hospitals, Medical Colleges, Dealers and Our Community.
- We are looking forward to our future “the best is yet to come”!!!
- **Our Mission, Vision & Core Values are more than just words. They are the foundation & back-bone, upon which we are creating the best company we can be, and the most successful company in the hospital furniture segment.**

MATERIALS AND PROCESS

- All S.S. material is of 304 Grade.
- All CRCA M.S. Sheets directly supplied from **TATA STEEL**.
- All S.S. material polished with **Matt Polish 3M (USA)**.
- Castor wheels are from TENTE-Germany & Jaisons (ISO Company)
- Raw material (M.S.) are pre-treated with 11 tank Hot Chemical Process from **Henkal**

Chembond Surface Technologies Ltd.

- Powder Coating is done through spray gun & its testing includes:
- Bend Test.
- 100KGS. Impact Test.
- Scratch Test.
- 500 HRS. Salt Spray Test.
- Guaranteed Epoxy Powder Coating.

FACTORY, OFFICE & DISPLAY

Kamdhenu Industrial Area, Link Road,
Saharanpur - 247001 (U.P)
Ph.: +91 9219619455 / 9897780080
Email:- balajisre@gmail.com
website:- www.balajient.in

Dehradun office:-

Agarwal Enterprises,
70/6 Ballupur, Near ONGC Hospital,
Dehradun - 248001 (U.K)
Ph.: 0135-2753322 / 9719359804
email:- agarwal.enterprise@gmail.com
website:- www.nlive.in

Jaipur office:-

101 Vasundhra colony, Tonk Road,
Jaipur (Rajasthan)
Ph.: +91 9414062995



CERTIFICATION

- We have certification for our product quality.

CERTIFICATE OF REGISTRATION
This is to certify that the Quality Management System of
BALAJI ENTERPRISES

Address : Kamdhenu Complex, Udyog Nagar, Link Janta Road, Saharanpur - 247 001, (U.P) INDIA.

has been assessed and found in compliance with the requirements of

ISO 9001:2008
Concerning the Following activities
Manufacturing & Supply of Steel Furniture, Instruments Equipments for Hospital and Laboratory and Food Processing Machinery.

Certificate No. CQ - XYZ
Date of initial registration 28/11/2014 Date of this Certificate 28/11/2014
Date of expiry 27/11/2017 Date of Recertification Due 27/11/2017

Subject to the Company Maintaining its system to the required standard





Managing Director

PSA Quality Certification Ltd.
2nd Floor, Phool Singh Complex, Atta Sector- 27 Noida- 201301 (U.P.) India
Info@psacertification.com, www.psacertification.com
Accredited By American International Accreditation Organization
201 Los Gatos Saratoga Road, Suite 144, Los Gatos, CA 95030, USA

CERTIFICATE OF REGISTRATION
This is to certify that the Medical Device Management System of
BALAJI ENTERPRISES



Address : Kamdhenu Complex, Udyog Nagar, Link Janta Road, Saharanpur - 247 001, (U.P) INDIA.

has been assessed and found in compliance with the requirements of

ISO 13485:2012
Concerning the Following activities
Design, Manufacturer & Suppliers of Medical Equipments & Instruments and Equipments for Hospital and Laboratory and Hospital Furniture.

Certificate No. CQ - PSA/IN/MD/XYZ
Date of initial registration 28/11/2014 Date of this Certificate 28/11/2014
Date of expiry 27/11/2017 Date of Recertification Due 27/11/2017

Subject to the Company Maintaining its system to the required standard

Managing Director

PSA Quality Certification Ltd.
2nd Floor, Phool Singh Complex, Atta Sector- 27 Noida- 201301 (U.P.) India
Info@psacertification.com, www.psacertification.com
Accredited By American International Accreditation Organization
201 Los Gatos Saratoga Road, Suite 144, Los Gatos, CA 95030, USA

Certificate of Verification
This is to certify that the Sustainability Assessment Standard
BALAJI ENTERPRISE

Address : Kamdhenu Complex, Udyog Nagar, Link Janta Road, Saharanpur - 247 001, (U.P) INDIA.




has been assessed and found in compliance with the requirements of

BIFMA INTERNATIONAL
Business and Institutional Furniture Sustainability Assessment Standard
BIFMA E -2011
Concerning Following Activities :
Manufacturer & Supply of Modular Furniture, Office Chairs and Sofa and Laboratory Furniture and Modular Kitchen Furniture

The level of Conformance is 'Gold'

Certificate No. PSA/IN/BIFMA/201
1st Surveillance Date Due on 22/12/2015 Date of initial registration 22/12/2014
2nd Surveillance Date Due on 22/12/2016 Date of certificate expiry 21/12/2017

Subject to the company maintaining its system to the required standard

Managing Director

PSA Quality Certification Ltd.
2nd Floor, Phool Singh Complex, Atta Sector- 27 Noida- 201301 (U.P.) India
Info@psacertification.com, www.psacertification.com

CERTIFICATE OF COMPLIANCE
We confirm that the Technical Documentation for the Below Mentioned Products.
According to the Council Directive 93/42/EEC, 2006/95/EEC Directive.
Surgical Instruments, Laboratory Equipments, Hospital Furniture, Neonatology Equipments.




BALAJI ENTERPRISES
Address : Kamdhenu Complex, Udyog Nagar, Link Janta Road, Saharanpur - 247 001 (U.P.) INDIA.

Comply with the applicable essential requirements of directive 93/42/EEC, 2006/95/EEC the PSA Conformity assessment has verified all the technical documentation, the product description documents, assessment procedure and evaluations of the examination as presented in technical construction file (TCF).

This Certificate is issued under following conditions:

1. The Certificate validity is conditioned by the positive results of the surveillance audit
2. All Modification to the technical file should be first submitted to the third party Inspection Authority to ensure further validity of the attestation.
3. The Certificate remains valid the manufacturing conditions, the quality systems or relevant legislation are changed.
4. Product description for the detailed specification refer to appendix page I, II, III.
5. After fulfilling the relevant EU legislation requirements, the manufacturer is obliged to issued declaration of conformity according to the basic requirements of relative directives (93/42/EEC, 2006/95/EEC Annex VII Section 3.) and placed the CE marking with his own responsibility as follows.

Certificate No. PSA/IN/CE/XYZ
Date of initial registration 24/11/2014 Date of this Certificate 24/11/2014
Date of expiry 23/11/2017 Date of Recertification Due 23/11/2017

Managing Director

PSA Quality Certification Ltd.
2nd Floor, Phool Singh Complex, Atta Sector- 27 Noida- 201301 (U.P.) India
Info@psacertification.com, www.psacertification.com

I.C.C.U & I.C.U BEDS



BE - 7000

EXTREME BED- FULLY MOTORISED HI-LO I.C.C.U BED

Approximate Size : L 2250 X W 1030 X H 450-850 mm



Specification:-

- Five way functional bed
- All function i.e. Backrest, Kneerest, Height Adjustment, Trendelenburg & Reverse
- Trendelenburg position- Operated by Actuator
- All function operated by Four motors
- Head & Foot side Molded panels with ABS Top
- Tuck down molded railing
- S.S. IV rod- Telescopic
- Urine bag hook
- 125mm Dia non rusting castor **with Central & Directional locking system**
- Attendant Control panel
- Bed with angle indicator & one remote for patient use
- Bed extension
- Finish pretested in 11 tank hot process & epoxy powder coated.
- Four section 100mm foam mattress with jointless rexine cover having zip & belt facility suitable for bed



Optional (cost – extra)

- Fully Motorized bed without central & directional locking system (Item Code:- 9010)
- Stabilizer
- Battery Back-up



BE - 7010

EXCELLENT BED- TWO FUNCTIONAL MOTORISED HI-LO I.C.C.U BED

Approximate Size : L 2220 X W 980 X H 490 - 730 mm



Specification:-

- Head & foot molded panels with ABS top
- Back section & HI-LO operated by Actuator
- Trendelenburg / Reverse Trendelenburg & Knee section operated by collapsible fix handle
- Both function operated by Two motors
- 125mm Dia non rusting castor two with breaks & two without breaks
- S.S IV pole- Telescopic
- Tuck down molded railing
- Urine bag hook
- Finish pretested in 11 tank hot process & epoxy powder coated
- Four section 100mm foam mattress with jointless rexine cover having zip & belt facility suitable for bed

Optional (cost extra)

- Stabilizer
- Battery Back-up





Options:

- Battery back up
- Automatic Night Light
- Automatic contour positioning

Mattress:

- Suitable 4 Section mattress

Dimensions:

- Head elevation of 0 - 70 degrees
- Knee elevation of 0 - 45 degrees.
- Trendlenburg/Reverse Trend of 0 - 15 degrees
- Area of sleep surface: 35" x 80"
- High Position floor to top of pan deck: 30" or more.
- Low position floor to top of pan deck: 19" or less



High density sponge
4 section sponge mattress



5" Castors, 2 with brakes



Two sections I.V. Pole
(4 hooks/2 hooks)



Also available with elevation
gauges indicating degree side railing



Also available in wooden colour

Warranty:

- Three years on all parts and services
- Lifetime warranty on all frame welds
- Spare parts will be available for 5 years from the date of discontinuation of the product



BE - 7020

EXCELLENT BED- HI-LO I.C.C.U BED

Approximate Size : L 2220 X W 890 X H 490 - 730 mm



Specification:-

- Four section perforated top.
- Head & foot molded panels with ABS top
- All function i.e. Back section, Leg rest, Height adjustment with **manual detachable S.S handle**
- Tuck down molded railing
- 125mm Dia non rusting castor two with breaks & two without breaks
- Saline arrangement on four location with one I.V. pole with S.S. rod
- Complete with corner buffers
- Urine bag Hook
- Finish pretested in 11 tank hot process & epoxy powder coated
- Four section 100mm foam mattress with jointless rexine cover having zip & belt facility suitable for bed



BE - 7030

I.C.C.U. BED - MECHANICAL

Approximate Size : L 2160 X W 910 X H 625-820 mm



Specification:-

- Manual Hi-Low bed with head pan deck
- 5" Castors, 2 swivel and 2 with brakes
- Plastic moulded Head & Foot end panels. Head end panel removable for CPR procedures.
- Hi-Low Trend/Reverse trend, Head Up/Down controls at foot end of the bed with 4 sections.
- Vascular positioning bar at foot end.
- Articulating Half Length side rails at the head end of the bed for patient safety and convenience.
- Tuck away side rails providing Zero Gap transfer with compatible stretchers.
- Elevation gauges indicating degree of head elevation located on both side of the bed.
- Gauge indicating degree of Trend/Reverse trend located at Head and foot end of the bed.
- Drainage bag holders on both sides of the bed.
- Six receptacles for IV rod located at the foot end, head end and at the seat level.
- Roller bumpers to protect the bed and walls during transport





Options:

- Battery back up
- Automatic Night Light
- Automatic contour positioning

Mattress:

- Suitable 4 Section mattress

Dimensions:

- Head elevation of 0 - 70 degrees
- Knee elevation of 0 - 45 degrees.
- Trendlenburg/Reverse Trend of 0 - 15 degrees
- Area of sleep surface: 35" x 80"
- High Position floor to top of pan deck: 30" or more.
- Low position floor to top of pan deck: 19" or less



High density sponge
4 section sponge mattress



5" Castors, 2 with brakes



Two sections I.V. Pole
(4 hooks/2 hooks)



Also available in wooden colour



Also available with elevation
gauges indicating degree side railing

Warranty:

- Three years on all parts and services
- Lifetime warranty on all frame welds
- Spare parts will be available for 5 years from the date of discontinuation of the product



BE - 9121

EXCELLENT BED- I.C.C.U BED

Approximate Size : L 2220 X W 980 X H 490 - 730 mm



Specification:-

- Four section perforated top.
- Plastic moulded Head & Foot end panels. Head end panel removable for CPR procedures.
- All function i.e. Back section, Leg rest, Height adjustment & Trendelenburg / Reverse Trendelenburg with **manual detachable S.S handle**
- Detachable pair of collapsible side rail
- 125mm Dia non rusting castor two with breaks & two without breaks
- Saline arrangement on four location with one I.V. pole with S.S. rod
- Complete with corner buffers
- Urine bag Hook
- Finish pretreated & epoxy powder coated

Optional (cost – Extra)

- Four section 100mm foam mattress with jointless rexine cover having zip & belt facility
Suitable for bed (Item code:- M-0162)



Wardcare Beds

Fowler & Semi-fowler



BE - 8100

WARD CARE BED - DELUXE (Fix Height, Fowler Position)

Approximate Size : L 1980 X W 910 X H 610 mm



Specification:-

- Backrest & Kneerest operated by screw mechanism fitted with collapsible fix handle.
- Heavy ABS head and foot panel with locking and corner buffer.
- Four section perforated top
- Framework made up of M.S. Tubes.
- Saline arrangement on four location
- Leg fitted with PVC shoes
- Finish pretreated & epoxy powder coated



Optional (cost – Extra)

- 100mm foam mattress with jointless rexine cover having zip & belt facility suitable for bed (Item code:- M-0157)
- 125mm Dia Indian Black castor two with breaks & two without breaks (Item Code:- E-0003)
- Detachable S.S collapsible side rail (Item code:- EX-1000)

BE - 8010

WARD CARE BED SEMI-DELUXE (Fix Height, Fowler Position)

APPROXIMATE SIZE : L 1980 X W 910 X H 610 mm

Specification:-

- Four section perforated top
- Detachable pair S.S head & foot with laminated panel made from Plywood material with Sunmica
- Framework made up of M.S. Tubes.
- Backrest & Kneerest operated by screw mechanism fitted with collapsible fix handle.
- Saline arrangement on four location
- Leg fitted with PVC shoes
- Finish pretreated & epoxy powder coated



Optional (cost – Extra)

- 100mm foam mattress with jointless rexine cover having zip & belt facility suitable for bed (Item code:-M-0157)
- I.V. Pole with S.S. rod (Item code:- E-0001)
- Detachable S.S collapsible side rail (Item code:- EX-1000)



BE - 8050

WARD CARE BED (Standard)

Approximate Size : L 290 X W 910 X H 600 mm

Specification:-

- Four section perforated top made up of oval perforated CRCA M.S. sheet.
- Tubular head and foot bows of unequal height with vertical tube support.
- Frame work made up of M.S. tubes.
- Backrest & Knee rest operated by screw mechanism fitted with collapsible fix handle
- Saline arrangement on four location
- Leg fitted with PVC shoes
- Finish pretreated & epoxy powder coated

Optional (cost – Extra)

- 100mm foam mattress with jointless rexine cover having zip & belt facility suitable for bed (Item code:- M-0157)
- I.V. pole with S.S. rod (Item code:- E-0001)
- 125mm Dia Indian Black castor two with breaks & two without breaks (Item Code:- E-0003)
- Detachable Powder coated (P.C.) collapsible side rail (Item code:- EX-1001)



BE- 6100

WARD CARE BED - ELECTRIC (Fix Height, Semi-fowler Position)

APPROXIMATE SIZE : L 2090 X W 910 X H 600 mm

Specification:-

- ABS head and foot panel with locking and corner buffer
- Advance linear actuator system (with motor, control box, handset)
- Two section perforated top made up of oval perforated CRCA M.S. Sheet.
- Saline arrangement on four location
- Leg fitted with PVC shoes
- Finish pretreated & epoxy powder coated

Optional (cost – extra)

- 100mm foam mattress with jointless rexine cover Having zip & belt facility suitable for bed (Item code:- M-0156)
- I.V. pole with S.S. rod (Item code:- E-0001)
- 125mm Dia Indian Black castor two with breaks & two without breaks (Item Code:- E-0003)



BE - 6200

WARD CARE BED DELUXE - (Fixed Height, Semi-fowler Position)

Approximate Size : L 1980 X W 910 X H 610 mm

Specification:-

- Two section perforated top made up of oval perforated CRCA M.S. sheet.
- ABS head and foot panel with locking and corner buffer
- Backrest operated by screw mechanism
Fitted with collapsible fix handle
- Saline arrangement on four location
- Leg fitted with 125mm Dia non rusting castor two with breaks & two without breaks
- Finish pretreated & epoxy powder coated



Optional (cost – extra)

- 100mm foam mattress with jointless rexine cover having zip & belt facility suitable for bed (Item code:- M-0156)
- I.V. pole with S.S. rod (Item code:- E-0001)

BE - 6300

WARD CARE BED (Standard)

APPROXIMATE SIZE : L 1980 X W 910 X H 610 mm

Specification:-

- Tubular head and foot bows of unequal height with vertical tube support.
- Backrest operated by screw mechanism fitted with collapsible fix handle
- Two section perforated top made up of oval perforated CRCA M.S. sheet.
- Frame work made up of M.S. Tubes.
- Saline arrangement on four location
- Leg fitted with PVC shoes
- Finish pretreated & epoxy powder coated

Optional (cost – Extra)

- 100mm foam mattress with jointless rexine cover having zip & belt facility suitable for bed (Item code:- M-0156)
- I.V. pole with S.S. rod (Item code:- E-0001)
- Detachable Powder coated (P.C.) Collapsible side rail (Item code:- EX-1001)



BE - 6500

WARD CARE BED DELUXE - PLAIN BED

Approximate Size : L 1900 X W 910 X H 610 mm

Specification:-

- Frame work of specially designed CRC rectangular heavy tube
- Machine pressed CRC sheet top with proper support
- Detachable pair S.S head & foot with laminated panel made from Plywood material with Sunmica
- 100mm foam mattress with rexine cover Having zip & belt facility suitable for bed
- Saline arrangement on four location
- Leg fitted with PVC shoes
- Finish pretreated & epoxy powder coated



BE - 6550

WARD CARE BED - PLAIN BED

Approximate Size : L 1900 X W 910 X H 610 mm

Specification:-

- Frame work of specially designed CRC rectangular heavy tube
- Machine pressed CRC sheet top with proper support
- Detachable pair M.S. with powder coating panel at head & foot side
- Saline arrangement on four location
- Leg fitted with PVC shoes
- Finish pretreated & epoxy powder coated
- 100mm foam mattress with rexine cover having zip & belt facility suitable for bed



BE - 121

VISITOR SEAT CUM BED - WITH FOAM MATTRESS

Approximate Size : L 1830 X W 610 X H 460mm

Specification:-

- Tubular frame work
- Leg fitted with PVC shoes
- 75mm foam mattress with rexine cover



BE - 7575

GENERAL BED

Approximate Size : L 1900 X W 910 X H 610mm

Specification:-

- Machine pressed CRC sheet top with proper support
- Head bows 1060mm height with three vertical & one horizontal support.
- Leg fitted with PVC shoes
- Finish pretested in 11 tank hot process & epoxy powder coated



BE - 7400

JUNIOR WARD CARE BED

Approximate Size : L 1450 X W 800 X H 610mm

Specification:-

- Machine pressed CRC sheet top with proper support
- Head & leg bows are of equal height with two vertical & one horizontal support
- Leg fitted with PVC shoes
- Two side full length detachable rail
- Finish pretested in 11 tank hot Process & epoxy powder coated

Optional (cost – extra)

- Foam mattress with rexine cover
Suitable for bed (Item code:- M-7400)



BE - 122

PATIENT'S OPD COUCH/CHAIR

Approximate Size : L 190 X W 62 X H 58 mm

Specification:-

- Frame work made up of rectangular M.S. Tubes
- The fabric is pressed artificial leather
- Legs fitted with PVC stumps.
- Finish pretreated & epoxy powder coated.





BE - 601

PATIENT BED SIDE LOCKER -EXECUTIVE

Approximate Size : L 400 X W 400 X H 820mm

Specification:-

- Machine pressed CRC sheet cabinet enclosed on three sides
- Having one drawer & one cabinet
- Having S.S. top tray type three side borders
- Four swivel 50mm Dia. Non rusting castor
- Buffer at rear
- Finish pre-treated and epoxy powder coated.

BE - 602

PATIENT BED SIDE LOCKER -S.S. TOP WITH S.S. TRAY

Approximate Size : L 400 X W 400 X H 820mm

Specification:-

- Machine pressed CRC sheet cabinet
- Having door with ventilation louvers
- Having S.S. Top & S.S. Tray fitted on cabinet
- Tubular Leg fitted with PVC shoes
- Finish pre-treated and epoxy powder coated.



BE -603

PATIENT BED SIDE LOCKER - S.S. TOP

Approximate Size : L 400 X W 400 X H 820mm

Specification:-

- Machine pressed CRC sheet cabinet
- Having door with ventilation louvers
- Having S.S. Top
- Tubular Leg fitted with PVC shoes
- Finish pre-treated and epoxy powder coated.



BE - 604

PATIENT BED SIDE LOCKER - ABS

Approximate Size : L 480 X W 470 X H 755 mm

Specification:-

- 2 pcs towel stands
- 4 pcs oddment hooks
- Optional choose : 4 pcs 2" castors
- Optional choose : 1pc water bottle stand



BE - 605

CARDIAC TABLE (ADJUSTABLE BED SIDE - PNEUMATIC)

Approximate Size : L 800 X W 400 X H 750-1050 mm

Specification:-

- Movable, can adjust the position low or high
- Rectangular frame work mounted on 2" castors
- Made of ABS and aluminum alloy
- ABS top adjustable by pneumatic gas spring



BE - 606

CARDIAC TABLE (ADJUSTABLE BED SIDE - GEAR HANDLE)

Approximate Size: L 760mm X W 400mm X H 730 - 1090 mm

Specification:-

- Single section membrane pressed top with raised edges
- Rectangular frame work mounted on 2" non rusting castors
- Height adjustment by geared mechanism fitted with collapsible fix handle
- Finish pre-treated and epoxy powder coated.



BE - 607

CARDIAC TABLE (ADJUSTABLE BED SIDE - KNOB)

Approximate Size : L 760mm X W 400mm X H 730 - 1090 mm

Specification:-

- Movable, can adjust the position low or high
- Rectangular frame work mounted on 2" castors
- ABS top adjustable by side knob.



BE - 609

MAYO'S TROLLEY

Approximate Size : L 560 X W 400 X H 760-1270 mm

Specification:-

- Tray made of 0.9 mm thick S.S. 304 grade sheet.
- Complete S.S. tubular frame work
- 50mm Dia. Non rusting Castors
- Finish : S.S. Frame with S.S. top.

BE - 608

CARDIAC TABLE (FIXED)

Approximate Size : L 1050 X W 400 X H 975 mm

Specification:-

- Tubular frame work mounted on 2" castors.
- Fixed membrane press wooden laminated top.
- Finish pre-treated and epoxy powder coated.



BE - 704

PATIENT'S REVOLVING STOOL (SS TOP)

Specification:-

- Four leg base with PVC stumps
- Height adjustment by machine screw from 18" x 27"
- Foot rest ring support made of MS Tube
- Finish pre-treated and epoxy powder coated.

Also available in S.S. Frame work and S.S Top



BE - 705

PATIENT'S REVOLVING STOOL (CUSHIONED TOP)

Specification:-

- Four leg base with S.S. Tubular frame work
- Height adjustment by machine screw from 18" x 27"
- Foot rest ring support made of S.S. Tube



BE - 706

LAB TECHNICIAN STOOL

Specification:-

- Height adjustable cushioned seat
- 5 legs base on castors
- Foot rest ring support made of S.S. Tube



BE - 707

SURGEON CHAIR

Specification:-

- Pneumatic height adjustable.
- Height adjustable and swinging back rest.
- 5 legs base on castors with foot ring.
- Base fitted with 50 mm dia castors



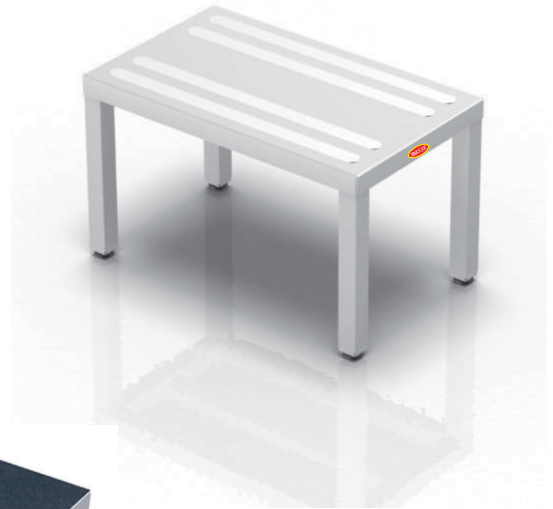
BE - 701

SINGLE STEP STOOL

Approximate Size : L 460 X W 310 X H 150mm

Specification:-

- Machine pressed CRCA sheet top fitted with aluminum tread flats
- Tubular frame work Leg fitted with PVC shoes
- Finish pre treated and epoxy powder coated
- Also available in complete S.S



BE - 702

DOUBLE STEP STOOL

Approximate Size : L 460 X W 600 X H 300 mm

Specification:

- Machine pressed CRCA sheet top fitted with aluminum tread flats
- Tubular frame work Leg fitted with PVC shoes
- Finish pre treated and epoxy powder coated
- Also available in complete S.S



BE - 703

BED SIDE STOOL

Approximate Size: L 300 X W 300 X H 510 mm

Specification:-

- Top made of CRCA sheet double bent
- Legs made of 25 mm x 18 G and horizontal support of 19 mm x 18 G CRCA tube fitted with PVC stumps
- Finish pre treated and epoxy powder coated

Optional (cost –extra)

- Bed Side Stool – **Cushioned Top** (Item code:- 2270)



BE - 501

EXAMINATION TABLE

Approximate Size : L 1830 X W 610 X H 840 mm

Specification:-

- Machine pressed double bent CRCA sheet
- Having top two section
- Head flap adjustment on ratchet
- Tubular frame work Leg fitted with PVC shoes
- Provided with 50 m.m thick high density special PU foam mattress all side covered with high quality heavy duty rexine.
- Finish Pre-treated and Epoxy Powder Coated



BE - 502

EXAMINATION TABLE CUM GYNAEC TABLE

Approximate Size : L 1830 X W 610 X H 840mm

Specification:-

- Two section top with head section adjustable on ratchet
- Made of CRCA sheet and pipes
- Lithotomy leg holders with straps provided at Leg end.
- Provided with 50 m.m thick high density special PU foam mattress all side covered with high quality heavy duty rexine.
- Finish Pre-treated and Epoxy Powder Coated



BE - 503

EXAMINATION COUCH - WITH SINGLE STEP STOOL (PLAIN)

Approximate Size : L 1830 X W 610 X H820 mm

Specification:-

- Upper section three drawer
- Lower section has two separate cabinet & one center drawer
- Having swing tray for B.P. tray near head rest
- Supply with single step stool
- Provided with 50 m.m thick high density special PU foam mattress all side covered with high quality heavy duty rexine.
- Finish Pre-treated and Epoxy Powder Coated



BE - 504

EXAMINATION COUCH - WITH SINGLE STEP STOOL (GYNEC)

Approximate Size : L 1830 X W 610 X H 820 mm

Specification:-

- “U” cut at the lower end with a pair of Lithotomy rods with belt
- Upper section three drawer
- Lower section has two separate cabinet & one center drawer
- Having swing tray for B.P. tray near head rest
- Supply with single step stool
- Provided with 50 m.m thick high density special PU foam mattress all side covered with high quality heavy duty rexine.
- Finish Pre-treated and Epoxy Powder Coated



BE - 505

EXAMINATION COUCH - WITH SINGLE STEP STOOL (HEADER)

Approximate Size : L 1830 X W 610 X H 820 mm

Specification:-

- Head rest adjustments on Gas Spring
- Upper section three drawer
- Lower section has two separate cabinet & one center drawer
- Having swing tray for B.P. tray near head rest
- Supply with single step stool
- Provided with 50 mm thick high density special PU foam mattress all side covered with high quality heavy duty rexine.
- Finish Pre-treated and Epoxy Powder Coated



BE - 5050

DELIVERY BED

Approximate Size : L 1965 X W 900 X H 830 mm

Specification:-

- Three section top
- Back rest adjustment by screw mechanism
- Leg section can be telescoped under back rest for lithotomy position
- Detachable panels
- Middle & leg section removable for cleaning
- Pair of upholstered lithotomy crutches mounted on S.S. Rods
- Trendelenburg adjusted by handle operated on screw mechanism
- 125mm Dia, non rusting castor two with break
- Two side detachable S.S. Rail
- Foam mattress with rexine cover suitable for delivery bed
- Finish pretested in 11 tank hot process & epoxy powder coated



BE - 5051

LABOR TABLE - FULLY S.S.

Approximate Size : L 1830 X W 760 X H 760 mm

Specification:-

- Three section top
- Steel Tubular frame work
- Back rest operated on ratchet arrangement
- Trendelenburg adjusted by handle operated on screw mechanism
- Leg section can be telescoped under Back rest for lithotomic position
- Pair of upholstered lithotomic Crutches mounted on S.S. Rods
- Three side detachable S.S. Rail
- Complete S.S. finish met



BE -201

STRETCHER ON TROLLEY

Approximate Size : L 2140 X W 570 X H 820 mm

Specification:-

- Tubular frame work mounted on 200mm Dia. Castor
- Removable aluminum stretcher top supported with steel tubular frame
- Mounted with swing away S.S. side rails, oxygen arrangement & a saline rod with saline nob
- Finish pretested in 11 tank hot process & epoxy powder coated



BE -202

STRETCHER ON TROLLEY S.S

Approximate Size : L 2140 X W 570 X H 820 mm

Specification:-

- S.S frame work, strecher with adjustable back rest.
- 200mm Dia. Castor, 2 with breaks
- Mounted with swing away S.S. side rails, oxygen arrangement & a saline rod with saline nob.

BE -120

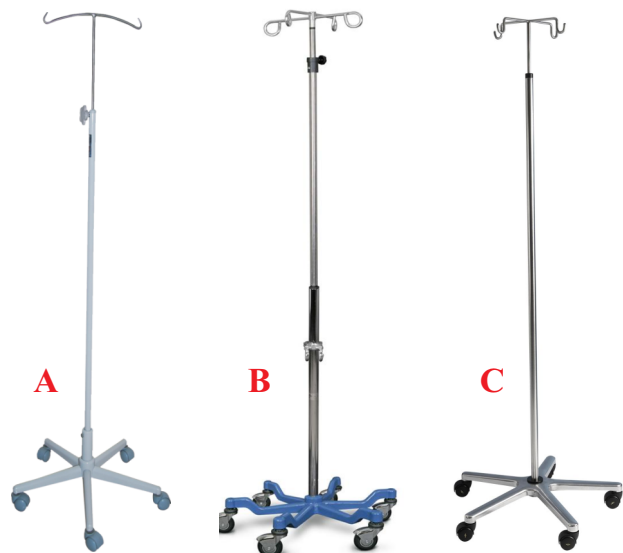
I.V. STAND

Approximate Size : 1350 mm to 2150 mm H

Specification:-

- Five pronged base fitted with 50mm castors
- 12 mm S.S. Adjustable I.V. Rod with 2/4 hooks

- (A) M.S pipe with M.S. base
- (B) S.S. pipe with plastic base
- (C) S.S. pipe with S.S. Base



BE - 203

STRETCHER ON TROLLEY - WITH TWO SIDE FLAP

Approximate Size : L 1830 X W 610 X H 820 mm

Specification:-

- Fix top made from CRCA sheets
- Two side foldable flap
- Tubular frame work mounted on 200mm Dia. Castor
- Finish pretested in 11 tank hot process & epoxy powder coated

Optional (cost – Extra)

- Foam mattress with rexine cover suitable for stretcher on trolley (Item code:- E-0034)



BE - 204

STRETCHER ON TROLLEY

Approximate Size : L 2140 X W 570X H 820 mm



Optional (cost – Extra)

- Foam mattress with rexine cover suitable for stretcher on trolley (Item code:- E-0033)
- Oxygen Arrangement (Item code:- E-0035)
- Stretcher with S.S. top (Item code:- 1047)

Specification:-

- Frame work made of 1.25" x 16G vertical and 1" x 18G horizontal CRC tubes.
- Trolley mounted on 200mm Dia. Castor, 2 with brakes.
- Removable aluminum stretcher top made of M.S. sheet with S.S. handle.
- Finish pretested in 11 tank hot process & epoxy powder coated



BE - 205

EMERGENCY TROLLEY

Approximate Size : L 2030 X W 560 X H 900 mm.

Specification:-

- Stretcher Approx. Size – 1830mm L X 556mm W
- Two section top
- Height adjusted by foot operated hydraulic pump
- X-Ray permeable removable stretcher
- Back rest raised on ratchet
- Trendelenburg / Reverse-Trendelenburg operated on gas spring
- 200mm Dia. Non rusting castor two with breaks
- Complete with corner buffers
- Sliding x-ray cassette holder
- Accessories tray
- Oxygen cylinder arrangement
- S.S. telescope I.V. Rod
- Swing away side rails
- Foam mattress with rexine cover suitable for emergency & recovery trolley
- Finish pretested in 11 tank hot process & epoxy powder coated



BE - 43

CRASH CART (STANDARD)

Approximate Size : D40 X W 71 X H 152 cm.

Specification:-

- Complete SS tubular frame work two molded Box with lockable three drawers.
- 6 nos. handout bins at eye level.
- Provision to hold oxygen slender made of M.S.
- Provided with S.S. saline rod and corner buffers
- One wooden board.
- 125mm Dia Castor two with breaks & two without breaks.



BE - 44

CRASH CART (DELUXE)

Approximate Size : L 960 X W 500 X H 1545 mm

- Complete SS tubular frame work two molded box with lockable three drawers.
- 6 nos. handout bins at eye level.
- Provision to hold oxygen slender made of M.S.
- Provided with S.S. saline rod and corner buffers
- One wooden board.
- 125mm Dia Castor two with breaks & two without breaks.



BE - 45

MONITOR TROLLEY (DELUXE)

Approximate Size : L 800 X W 690 X H 1570 mm

- Top shelves fixed top approx size – 560mm L X 460mm W
- Other shelf size – 510mm L X 460mm W
- Shelf adjustments 40mm suitable for storing monitor, printer, stabilizer, etc
- Four shelf M.S. drawer at bottom
- 125mm Dia Castor two with breaks & two without breaks
- Having 5/15 Ampere board
- Having 3 pin plug electric board
- S.S. saline rod & powder coated oxygen cylinder arrangement
- Finish pretested in 11 tank hot process & epoxy powder coated

BE - 101

WARD DRESSING TROLLEY (DELUXE)

Approximate Size : L 1000 X W 510 X H 1000 mm

- Stainless steel tubular frame work mounted on 100mm Dia. castor
- Upper S.S. top fitted with four side railing
- Having S.S. bowl & bucket
- S.S. finish matt



BE - 102

OT DRUG TROLLEY

Approximate Size : 670mm L X 460mm W X 1530mm H

- Complete S.S. Structure
- Having 24 nos. small hand bins
- Having 12 nos. big hand bins
- One tray on top
- 25mm Dia. Castors two with breaks & two without breaks
- S.S. finish matt

BE - 103

INSTRUMENT TROLLEY (WITH RAILING)

OPTIONAL SIZES :

(A) 690mm L X 460mm W X 900mm H

(B) 1070mm L X 610mm W X 900mm H

- S.S. tubular frame work
- 100mm Dia. Castors
- Upper top fitted with three side S.S. Railing
- Down side fix top with railing
- S.S. finish matt



BE - 104

SURGICAL INSTRUMENT CABINET

Approximate Size : 610mm L X 460mm W X 1600 mm H

Specification:-

- Made from machine pressed CRCA sheet
- Front door with glass
- Three way lock system
- Five glass shelves adjustable making six compartment
- Finish pretested in 11 tank hot process & epoxy powder coated



BE - 105

MEDICINE CABINET

Approximate Size : L 960 X W 400 X H 1750 mm

Specification:-

- Complete stainless steel framework
- Two Front doors with glass
- Three way lock system
- Five S.S. shelves adjustable making six compartment

BE - 106

E.C.G. TROLLEY

Approximate Size : W 355 X D 480 X H 655 mm

Specification:-

- 3 trays & 50mm Dia Castor, Cable Hanger
- Pre-treated & Epoxy powder Coated.
- Available in full Stainless Steel / Epoxy powder Coated frame with S.S top.



BE - 61

MEDICINE TROLLEY - WITH SIX DRAWER

Approximate Size : 750mm L X 380mm W X 930 mm H

Specification:-

- Overall Approx. Size – 750mm L X 380mm W X 930mm H
- Six molded drawers
- Two drawers with utility container
- One S.S. tray on top
- One S.S. detachable tray downside
- Tubular frame work fitted with 100mm Dia. Castor
- Finish pretested in 11 tank hot process & epoxy powder coated



BE - 62

MEDICINE TROLLEY - WITH TWELVE DRAWER

Approximate Size : 750mm L X 380mm W X 930 mm H

Specification:

- Twelve molded drawers
- Two drawers with utility container
- One S.S. tray on top
- One S.S. detachable tray downside
- Tubular frame work fitted with 100mm Dia. Castor
- Finish pretested in 11 tank hot process & epoxy powder coated



BE - 63

MEDICINE TROLLEY (LUXURY)

APPROXIMATE SIZE : L 800 X W 490 X H 910 mm

- Be suitable for sickroom nursing
- Multiple-purpose drawers: enclosed type, lockable
- Adjusted medicine boxes in every drawer.
- Polyurethane noiseless castors, two of them with brakes.
- Easy to discharge



BE -113

SOILED LINEN TROLLEY(With Canvas Bag)

Approximate Size : 910mm L X 100 Dia mm

Specification:-

- 100mm Dia. Swiveling Castors
- With plastic coated canvas bag
- S.S. finish matt



BE -114

SOILED LINEN TROLLEY(With Plastic bucket)

Approximate Size : 910mm L X 100 Dia mm

Specification:-

- Push handle at one end.
- S.S. frame work on 10 cm castors.
- Superior quality plastic bucket.
- Complete in S.S. Frame.



BE -115

NURSING CART S.S.

Approximate Size : L 900 X W 500 X H 740 mm

Specification:-

- All stainless steel structure ,
Fold- deck with silent wheels and dirt bags.
- 100mm Dia. Swiveling Castors
- S.S. finish matt



BE - 110

BABY CRADLE

Approximate Size : L 900 X W 375 X H 975 mm

Specification:-

- Along with two of hooks for obtaining tilt position
- Stand frame work made of M.S. tubular pipe
- Legs fitted with PVC stumps
- Finish pre-treated and epoxy powder coated.



BE - 111

BABY BASSINET

Specification:

- Preprex transparent crib with mattress.
- Trendlenburg /Reverse trendlenburg adjustable manually
- S.S. Tubular frame work fitted with 50mm Dia. Castor, I.V. Rod.



BE - 112

BABY BASSINET (WITH UTILITY BOX)

Approximate Size: L 900 X W 375 X H 975 mm

Specification:

- Preprex transparent crib with mattress.
- Trendlenburg /Reverse trendlenburg adjustable manually
- S.S. Tubular frame work fitted with 50mm Dia. Castor, I.V. Rod



BE -116

WASH BASIN STAND

Approximate Size : 860mm H X 350 mm S.S. Bowl

Specification:-

- S.S. tubular frame work
- 50mm Dia. Castors
- S.S. finish matt



BE -117

KICK BUCKET - WITH CASTOR

Approximate Size : 1260 to 2060 mm H

Specification:-

- Tubular legs with complete S.S. frame
- 50mm Dia. Castors
- With 300mm S.S. Bowl
- S.S. finish matt



BE -118

FOUR FOLD SCREEN

Approximate Size : L 1680 X H 1680 mm



Specification:-

- M.S. Tubular frame work fitted with 50mm Dia. Castors
- Each span 610mm wide
- Finish pre-treated and epoxy powder coated.

BE -119

THREE FOLD SCREEN

Approximate Size : L 2450 X H 1680 mm



Specification:-

- M.S. Tubular frame work fitted with 50mm Dia. Castors
- Each span 610mm wide
- Finish pre-treated and epoxy powder coated.

BE - 5053

Labour Delivery Room Bed (Electric)

Approximate Size : L 1880 X W 660 X H 600-800 mm

Specification:-

- Tubular Frame work mounted on 125mm dia central locking castor.
- Three section top made of bakelite sheet covered with 3 section mattress
- Trendlenburg / Reverse Trendlenburg positions,
- Height adjustments, back section adjustment through electronic actuator system
- Leg end section can slide under the main section
- Height adjustment a pair of foam padded knee crutches.
- S.S. Telescopic I.V. Road with 4 hooks
- Detachable S.S. Tray
- ABS Head and Foot Panel
- S.S. Grip Handles.



BE -0245

BACKREST

Approximate Size : 610mm W X 510mm H

Specification:-

- Overall Approx. Size – 610mm W X510mm H
- Tubular frame work finish
- Finish pretested in 11 tank hot process & epoxy powder coated



BE -0250

OXYGEN TROLLEY

Approximate Size

Specification:-

- Suitable for 762mm height gascylinder
- Tubular frame work fitted with two 100mm Dia. Rubber wheels
- Finish pretested in 11 tank hot process & epoxy powder coated

Optional (cost – Extra)

- Big Oxygen Trolley (Item code:-0251)

BE -0316

FOLDING WHEEL CHAIR

Approximate Size

Specification:-

- Made from tubular frame work 150mm Dia. Front two swiveling castor wheel two bicycle ring with solid rubber tyre
- Finish pretested in 11 tank hot process & epoxy powder coated



BE -0002

Crib With Two Pipe Attachment



BE -0012

Crib With Attachment



BE -0001

Saline Arrangement



BE -1000

SLIDING SAFETY SIDE RAIL

Approximate Size

Specification:-

- Overall Approx. Size – 1220mm L X380mm W X 400mm H
- S.S. tubular frame work with powder coated arms G bracket easily detachable
- Suitable for rectangular tube frame bed
- Finish pretested in 11 tank hot process & epoxy powder coated

Optional (cost – Extra)

- Complete Powder Coated (Item code:- EX-1001)



BE - 45

EMERGENCY TROLLEY (LUXURY)

Approximate Size : 850 X 520 X 950 mm

Specification:-

- Designed to manage a first-aid patient in emergency.
- Easy to knock down.
- Economic designed push-handle and efficient structure.
- Pull-out sliding shelf improves efficiency of space application.
- Total lock key system.
- Upgraded efficiency of storing and mobility.
- Each drawer has ABS basket with well organizing dividers
- Four 5" wish with brakes.

Optional - CPR Board

Oxygen Tank Holder

Needle Disposal Holder



BE - 46

ANESTHESIA TROLLEY (LUXURY)

Approximate Size : L 800 X W490 X H 1490 mm

Specification:-

- The boards on the two sides and the drawers les are made of ABS
- Four transparent boxes at the upper part of trolley can store medicine and tiny medical apparatuses conveniently.
- Two concealed auxiliary working boards under tabletop. Enlarge the working space.
- Five drawers with lock can store different kinds of medicine and others.
- Waste bins are fixed on two sides.
- Polyurethane nosiness castors, two fo them with brakes.

Optional - CPR Board

Oxygen Tank Holder

Needle Disposal Holder



BE - 1001

Waiting Area Sofa (Luxury)

Specification:-

- Complete S.S. Frame
- Made of High Density foam



BE - 1002

Waiting Area Chair (Deluxe)

BE - 1003

Waiting Area Chair (Regular)



* Design and the sizes can be customized according to the requirement



HOSPITAL HOLLOWARES



BE - 801
Forceps jar



BE - 802
Urinal Pot (S.S.)
Male/female



BE - 803
Enema Can



BE - 804
Kidney tray



BE - 805
Bed pan (S.S.) Male/female



BE - 806
Seamless Dressing Drum (S.S.)



BE - 807
Bucket



BE - 808
S.S. Bowls



BE - 809
Instrument trays



BE - 810
Sputum mug



BE - 811
Basin (S.S.)



BE - 1200

Scrub Station

Scrub Station wall mounted, made of heavy duty Stainless Steel 304 grade designed for splash free usage without touching the taps directly with the handle.

The Station are available in the following options as per the sizes

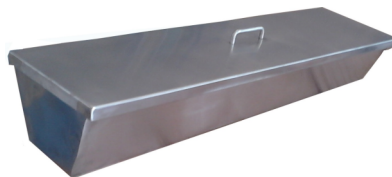
Model	Size	User	Tap
BE-1200	90Lx54Wx84H	One	Elbow/Foot/Sensor
BE-1200A	120Lx54Wx84H	Two	Elbow/Foot/Sensor
BE-1200B	195x54Wx84H	Three	Elbow/Foot/Sensor



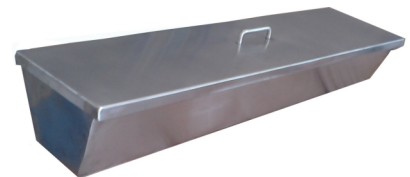
HOSPITAL HOLLOWARES



BE - 812
Formalin Chamber



BE - 813
Cidex Tray



BE - 813
Cidex Tray



BE - 1300

Vertical High Pressure Steam Sterilizer Autoclave (Tripple Walled)

High pressure water steam electrically heated vertical sterilizer used for sterilizing of surgical instruments, Dressing materials, Linen, Rubber, Plastic material, Injection liquids by means of steam under pressure of 15 to 20 PSI. (Adjustable) Tripple chamber with inner chamber and steam jacket. All Sterilizers are hydraulically tested upto 2.5 times of working pressure. Outer chamber made of stainless steel sheet reinforce with M.S. Sheet. Lid is made of thick stainless steel plate single piece and closed not allow any leakage, fitted with double safety value, Water level indicator, water inlet and drain valves. Supplied complete with cord and plug but without dressing bins, To work on 220 volts, Single Ph, 50 Hz, Ac supply.

Available in following sizes:-

* BE-1300(A) - 12" x 22" (40 Liters)

Dia	Depth	Element	Load	Total Load
300mm	550mm	2 Nos	2kw	4kw

* BE-1300 (B) - 16" x 24" (75 Liters)

Dia	Depth	Element	Load	Total Load
400mm	600mm	2 Nos	3kw	6kw

* BE-1300 (C) - 18" x 30" (75 Liters)

Dia	Depth	Element	Load	Total Load
450mm	750mm	2 Nos	4kw	8kw



Optional Accessories

- Automatic low water alarm / cutoff
- Pressure control switch
- Digital temperature indicator.
- Dial type analog temperature gauge.
- Mechanical timer 60 min.
- Mechanical timer with alarm system

BE - 1400

Horizontal High Pressure Steam Sterilizer Autoclave

Designed for steam sterilization by gravity air removal at 121 degree Celsius with fast or slow exhaust option for sterilizing container, ampoules, vials, bottles, test tubes, rubber articles of labs, hospitals and industries

- Working pressure up to 1.36 kg/cm² (20 P.S.I.G.) Vacuum up to 250 mm (10") of Hg
- Construction S.S. 316 or S.S 304 chamber and jacket of boiler grade steel with reinforcements
- Door inner construction of S.S. 304 grade
- Radial Locking System, Sliding door with tongue & groove system for big size models. Fitted with Silicon Gasket. Multi-port valve operation available for size up to 2' x 3' x 5' (850 liters)
- Large capacity units with direct steam operation have diaphragm type PRV, Small capacity units with steam generators with pressure switch with low water cut off system.



Available in following sizes:-

* BE-1400(A) - 16" x 24" (75 Liters)

Dia	Depth	Load
400mm	600mm	18kw

* BE-1400 (B) - 20" x 48" (220 Liters)

Dia	Depth	Load
500mm	1200mm	12kw

* BE-1400 (C) - 20" x 36" (165 Liters)

Dia	Depth	Load
500mm	900mm	12kw

